



Ketton CofE Primary School Proposed Secure Pedestrian Access and Parking Redevelopment

30th November 2016



Introduction & Welcome

Tim Charge – Ketton Parish Council
Chairman

The Background – Glenn Fraser, Headteacher, Ketton CofE Primary School

- The school accepts that the current drop-off arrangements are not ideal;
- By having to cross the entry/exit to the car park there is a danger of injury to all members of our school community;
- This risk is managed by having a member of staff in the area at key times to assist in safeguarding parents and children;
- The school regularly reminds parents to park sensibly and with consideration for our neighbours;
- A long standing issue not helped with the move of the doctors to the site and the closure of the old Ketton club;

The Background continued

- The car park is used by our neighbours as well as pre-school staff and parents;
- The school has grown by 50 plus pupils in the last five years;
- We reduced our Planned Admission Number to 28 for 2016 – due to pressure on places we lost at appeal and so we admitted 30. It is highly likely this will be the case for the foreseeable future;
- Between 70% - 75% of pupils come from our traditional catchment areas;
- Phase 1 – to create a pathway around the surgery – will remove the clear danger to our pupils and parents;
- The full proposal may not solve the parking issues completely but the status quo is unsustainable;
- The land in question is private land, owned by the Peterborough Diocese.

The Background



The Background



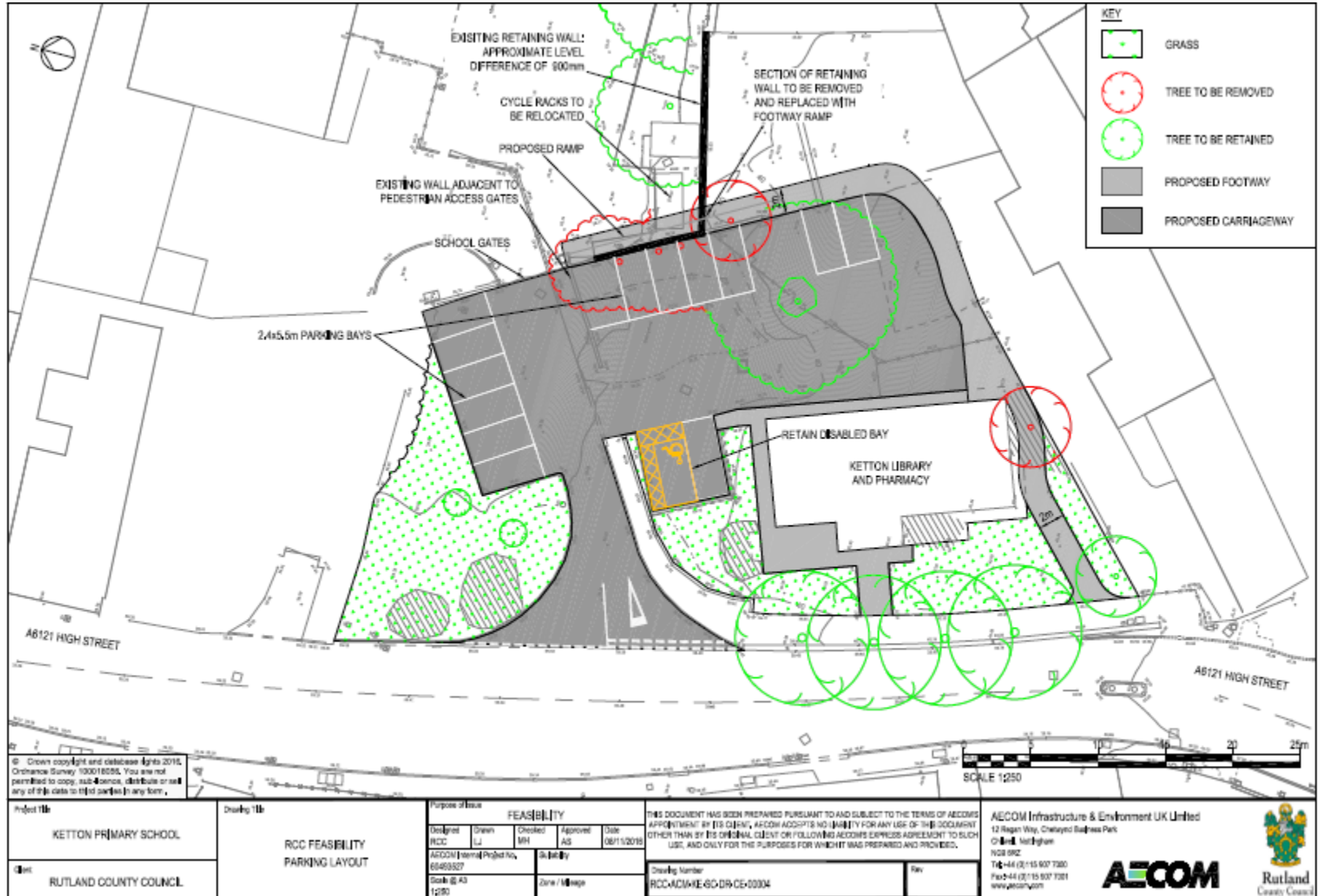
Ketton Parish Council View

- Long standing issues with parking and safety
- Village survey identified villagers concerns
- Regular discussions held at Parish Council meetings with no obvious resolution found
- RCC councillors took up the challenge and brought forward various proposals
- Proposals discussed at the recent Parish Council meetings
- Unanimous agreement reached to support the option to be proposed by Paul Phillipson

The Proposal – Paul Phillipson, Director of Places, RCC

- Long term lease of land from Peterborough Diocese
- Eliminates need for pedestrians to cross driveway
- Buggy and wheelchair accessible
- Maintains access to surgery and library
- Increases and improves available parking spaces

The Proposal



The Debate

- Tim Charge – Ketton Parish Council
- Glenis Southern – Ketton Parish Council
- Glenn Fraser – Ketton CofE Primary School
- Paul Phillipson – RCC
- Gary Conde – Rutland County Councillor for Ketton Ward
- Diana MacDuff – Rutland County Councillor for Ketton Ward